

# 7 WEST 45<sup>TH</sup> STREET

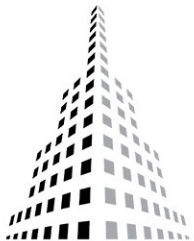
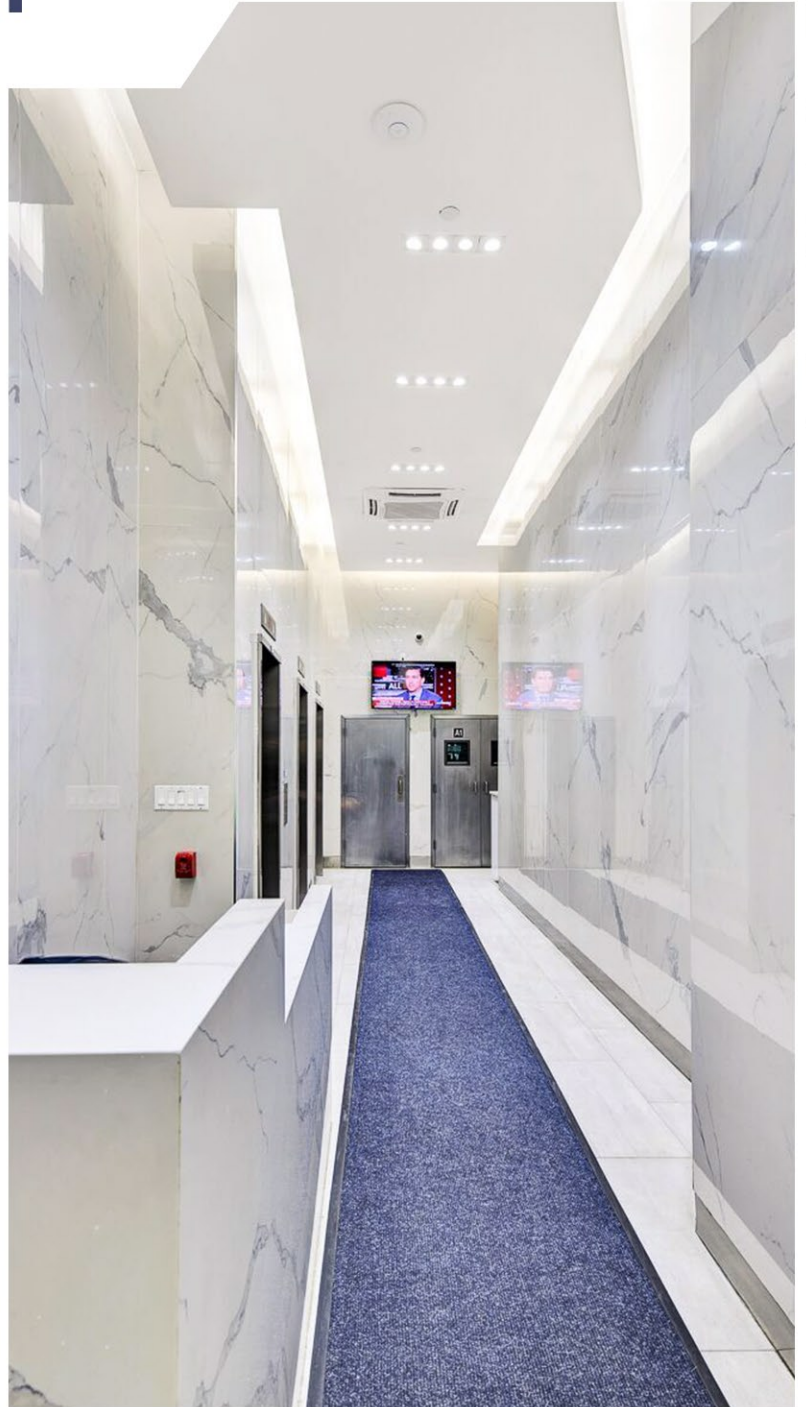
BETWEEN 5<sup>TH</sup> & 6<sup>TH</sup> AVENUE

**ENTIRE 14<sup>TH</sup> FLOOR: 5250 RSF**

**MULTIPLE DIVISIONS OF:**

**2000 RSF, 2700 RSF, 3500 RSF**

- **LANDLORD WILL PROVIDE ABOVE STANDARD NBI**
- **NEW MARBLE LOBBY, ELEVATOR CABS, CORRIDORS & RESTROOMS**
- **24/7 LOBBY ATTENDED/SECURITY**
- **STEPS FROM GRAND CENTRAL, BRYANT PARK, AND TIMES SQUARE**
- **CONVENIENT ACCESS TO ALL MAJOR TRANSPORTATION.**



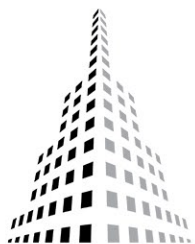
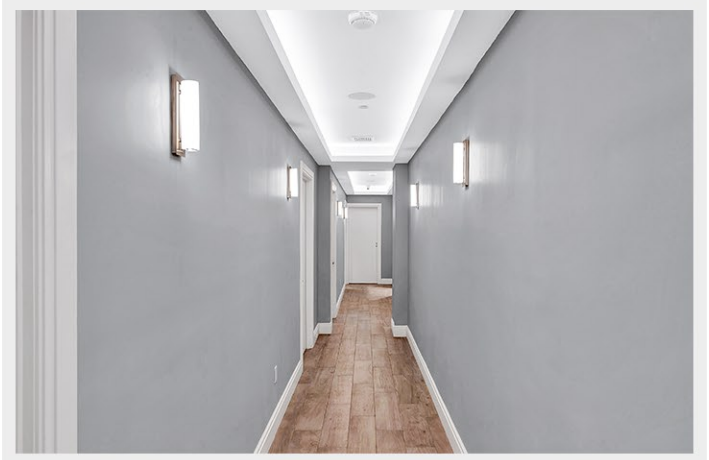
**LSL ADVISORS**  
COMMERCIAL REAL ESTATE

LSL ADVISORS | 53 WEST 36TH ST, 2ND FL | NEW YORK, NY 10018 | PH. (212) 221.0005  
DANIEL LOLAI (212) 278.8071 DIRECT LINE | (516) 376.0360 MOBILE | DANIEL@LSLADVISORS.COM  
ERIC SHIFFLETT (646) 838.0176 DIRECT LINE | (917) 943.5994 MOBILE | ERIC@LSLADVISORS.COM

THE INFORMATION CONTAINED HEREIN HAS BEEN OBTAINED FROM SOURCES DEEMED RELIABLE. WHILE WE DO NOT DOUBT ITS ACCURACY, WE MAKE NO GUARANTEE, WARRANTY OR REPRESENTATION ABOUT IT. THE PROSPECTIVE TENANT SHOULD CAREFULLY VERIFY EACH ITEM, AND ALL OTHER INFORMATION HEREIN.

# 7 WEST 45<sup>TH</sup> STREET

BETWEEN 5<sup>TH</sup> & 6<sup>TH</sup> AVENUE



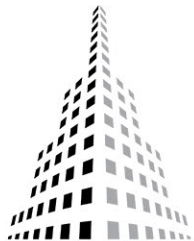
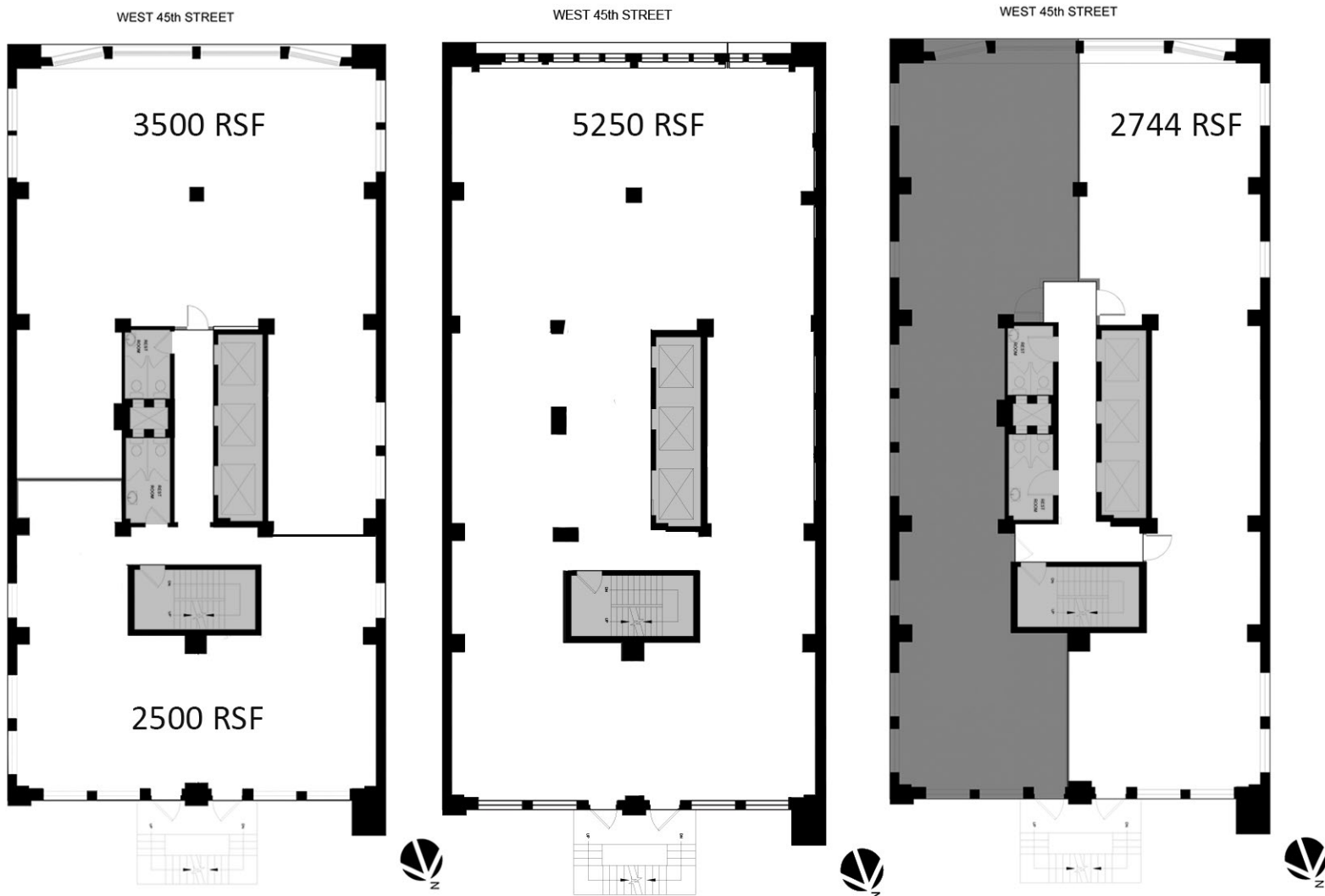
LSL ADVISORS  
COMMERCIAL REAL ESTATE

LSL ADVISORS | 53 WEST 36TH ST, 2ND FL | NEW YORK, NY 10018 | PH. (212) 221.0005  
DANIEL LOLAI (212) 278.8071 DIRECT LINE | (516) 376.0360 MOBILE | DANIEL@LSLADVISORS.COM  
ERIC SHIFFLETT (646) 838.0176 DIRECT LINE | (917) 943.5994 MOBILE | ERIC@LSLADVISORS.COM

THE INFORMATION CONTAINED HEREIN HAS BEEN OBTAINED FROM SOURCES DEEMED RELIABLE. WHILE WE DO NOT DOUBT ITS ACCURACY, WE MAKE NO GUARANTEE, WARRANTY OR REPRESENTATION ABOUT IT. THE PROSPECTIVE TENANT SHOULD CAREFULLY VERIFY EACH ITEM, AND ALL OTHER INFORMATION HEREIN.

# 7 WEST 45<sup>TH</sup> STREET

## 14th Floor



**LSL ADVISORS**  
COMMERCIAL REAL ESTATE

LSL ADVISORS | 53 WEST 36TH ST, 2ND FL | NEW YORK, NY 10018 | PH. (212) 221.0005  
**DANIEL LOLAI** (212) 278.8071 DIRECT LINE | (516) 376.0360 MOBILE | DANIEL@LSLADVISORS.COM  
**ERIC SHIFFLETT** (646) 838.0176 DIRECT LINE | (917) 943.5994 MOBILE | ERIC@LSLADVISORS.COM

THE INFORMATION CONTAINED HEREIN HAS BEEN OBTAINED FROM SOURCES DEEMED RELIABLE. WHILE WE DO NOT DOUBT ITS ACCURACY, WE MAKE NO GUARANTEE, WARRANTY OR REPRESENTATION ABOUT IT. THE PROSPECTIVE TENANT SHOULD CAREFULLY VERIFY EACH ITEM, AND ALL OTHER INFORMATION HEREIN.