

# 260 WEST 39<sup>TH</sup> STREET



LSL ADVISORS  
COMMERCIAL REAL ESTATE  
MEMBER TCN WORLDWIDE



# 260 WEST 39<sup>TH</sup> STREET

## SPACE AVAILABLE:

4<sup>TH</sup> FLOOR: 5,622 RSF

6<sup>TH</sup> FLOOR: 6,084 RSF

7<sup>TH</sup> FLOOR: 4,371 RSF

17<sup>TH</sup> FLOOR: 3,400 RSF

## VIRTUAL TOUR

## SPACE FEATURES:

- \* Landlord will provide Turnkey installation
- \* Oversized Windows
- \* Exposed 11' ceilings
- \* Wet Pantry
- \* Tenant controlled HVAC
- \* Great natural light
- \* 24/7 access with an attended lobby
- \* Steps from Bryant Park, Times Square, Port Authority, and Penn Station
- \* Convenient access to transportation

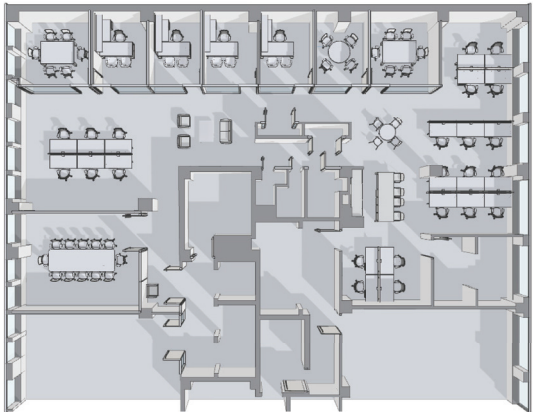


# 260 WEST 39<sup>TH</sup> STREET

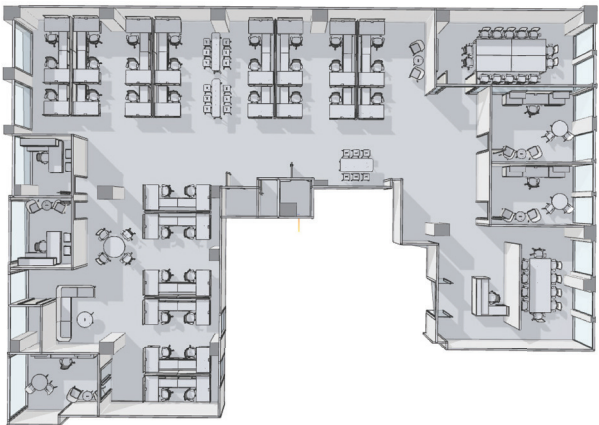
**VIRTUAL TOUR**

**SUITE 402 / 5,622 RSF**

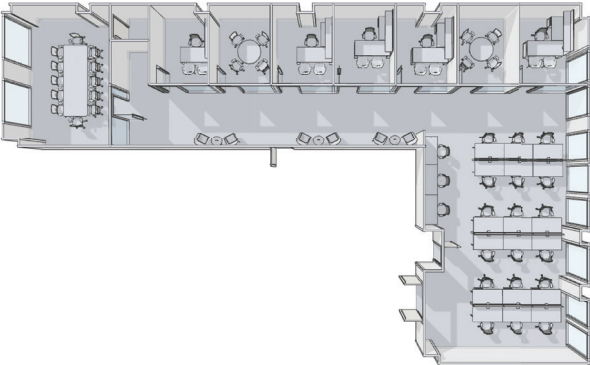
*FULLY FURNISHED*



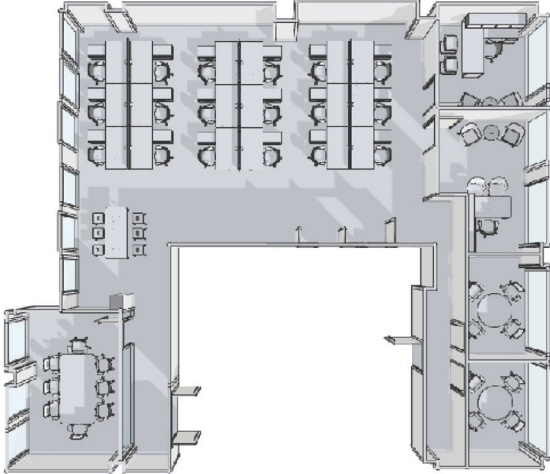
**SUITE 701 / 4,371 RSF**



**SUITE 1701 / 3,400 RSF**



**SUITE 602 / 6,084 RSF**



# 260 WEST 39<sup>TH</sup> STREET



## PRIME LOCATION

- ♥ Restaurants
- ♣ Health & Fitness
- ♣ Accommodations



**CONTACT:**  
**DANIEL LOLAI**  
**212.278.8071**  
**DLOLAI@LSLADVISORS.COM**

**ERIC SHIFFLETT**  
**646.838.0176**  
**ESHIFFLETT@LSLADVISORS.COM**